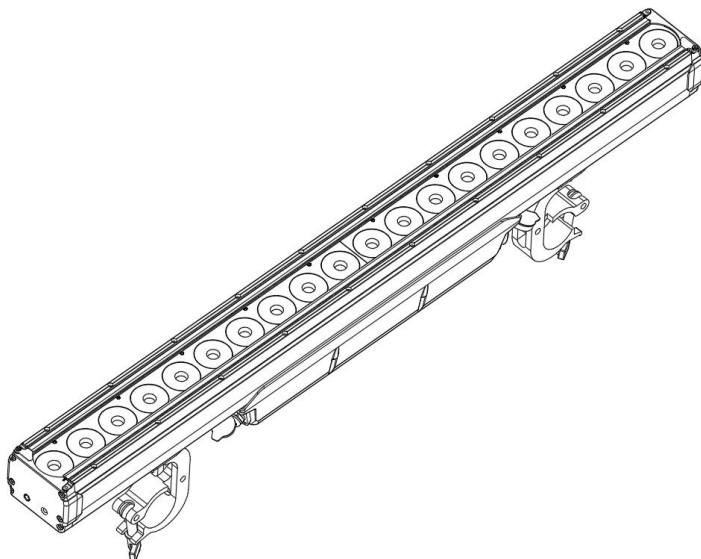


# Pixel-BAR

# NEW

**20 x 15W RGBW Pixel Bar**

**Version : 2.5**



This product manual contains important information about the safe installation and use of this projector. Please read and follow these instructions carefully and keep this manual in a safe place for future reference.

## User manual

Please read the instructions carefully before use

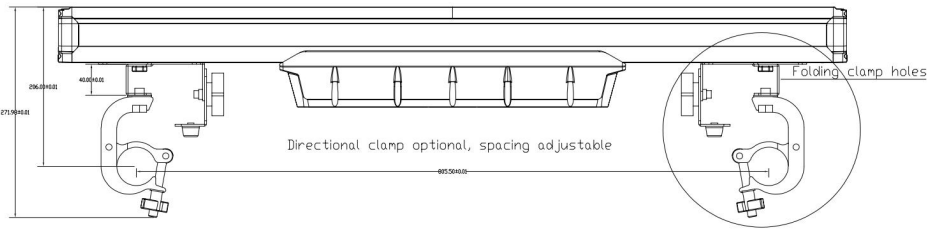
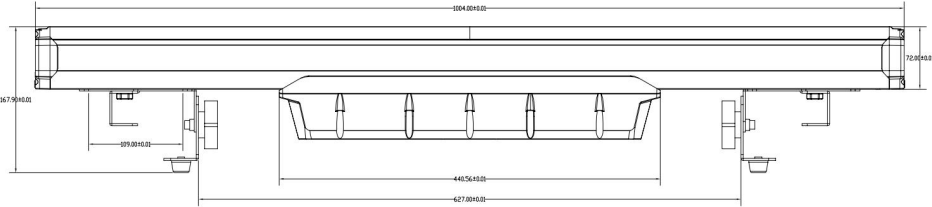
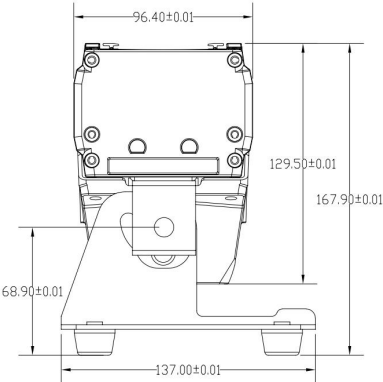
# TABLE OF CONTENTS

1. Dimension .....	3
2. Safety Information .....	4
3. Delivery Contents .....	5
4. Preparing for installation .....	5
5. Installation .....	6
6. Connecting AC Power .....	8
7. Connecting to a DMX control device .....	9
8. Configuring the fixture for DMX control .....	10
9. Cleaning .....	11
10. DMX protocols .....	11
11. Control menu .....	16
12. Specification .....	17

## Introduction

Thank you for your purchase and usage of the BAR. You have chosen a reliable product with outstanding features. The device is easy to use and is made of high quality components. Every Product is checked before shipping to secure you are able to receive a great product without compromise. This is not a toy. Our ambitious aim is to get you a reliable working tool.

# 1.Dimension(mm)



## 2. Safety Information



**WARNING!** Read the safety precautions in this section before unpacking, installing, powering or operating this product.

This luminaries are multi-environmental fixtures with an IP-rating of 65, intended for professional use only. They are not suitable for household use.

Review the following safety precautions carefully before installing or operating the fixture. This fixture must be installed in accordance with the applicable installation code by a person familiar with the construction and operation of the fixture and the hazards involved.



**WARNING!** Risk of electric shock.

- Always power off/unplug the fixture before removing any covers.
- Ensure that the power is turned off when connecting the fixture to the AC mains supply.
- Ensure that the fixture is electrically connected to earth (ground).
- Do not apply power if the fixture is in any way damaged.
- Do not immerse the fixture in water or liquid.



**WARNING!** Take measures to prevent burns and fire.

- Install in a location that prevents accidental contact with the fixture.
- Install only in a well-ventilated space.
- Install at least 0.3 m (12 in.) away from objects to be illuminated.
- Install only in accordance with applicable building codes.
- Ensure a minimum clearance of 0.1 m (4 in.) around the cooling fans.
- Do not paint, cover or modify the fixture.
- Keep all flammable materials away from the fixture.
- Allow the fixture to cool for 15 minutes after operation, before touching it.
- CAUTION: Exterior surface temperature after 5 min. operation = 45 °C

(113 °F). Steady state = 60 °C (140 °F).



**WARNING!** *Take measure to prevent personal injury.*

- Do not look directly at the light source from close range.
- Take precautions to prevent injury due to falls when working at height.
- For permanent installation, ensure that the fixture is securely fastened to a load-bearing surface with suitable corrosion-resistant hardware.
- For temporary installation with clamps, ensure that the quarter-turn fasteners are turned fully and secured with a suitable safety cable. The cable must be approved for a safe working load (SWL) of 10 times the weight of the fixture, and it must have a minimum gauge of 3 mm.

### **3. Delivery Contents(Only one fixture)**

- 1x LED Bar
- 1x Power Input cable(Can be customized)
- 1x DMX Cable
- 2x Stands
- 1x Safety cable
- 1x This lovely User Manuel

### **4. Preparing for installation**

Unpack the fixture and inspect it to ensure that it has not been damaged during transport.

The fixture is IP65-rated, and is designed for use in wet locations, for example, raining, snowing, BUT DO NOT SINK UNDER WATER!!!

This means that it is protected from:

- Dust, to the degree that dust cannot enter the fixture in sufficient quantities as to interfere with its operation.
- Lower pressure jets of water from any direction.

When selecting a location for the fixture, ensure that:

- It is situated away from public thoroughfares and protected from contact with people.
- It is not immersed in water or exposed to high-pressure water jets.
- It has adequate ventilation.

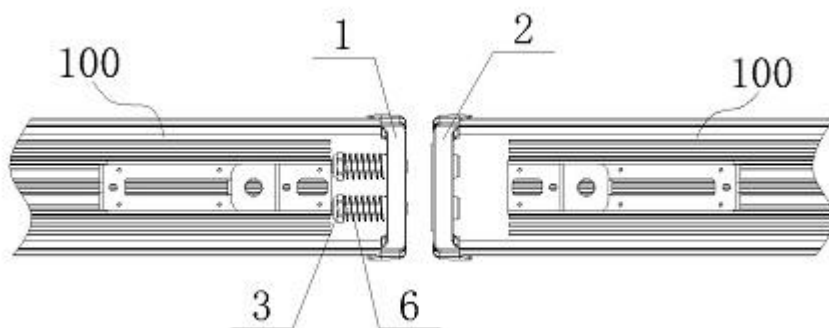
## 5. Installation

Your BAR can be installed in every kind of following positions.

Please see the explanations and rely to the instructions for a safe operation and secure handling.

### Structural Connection

The BAR can be connected using the included quick-release pins. Place the devices next to each other.



(Insert both Pins to connect the devices)

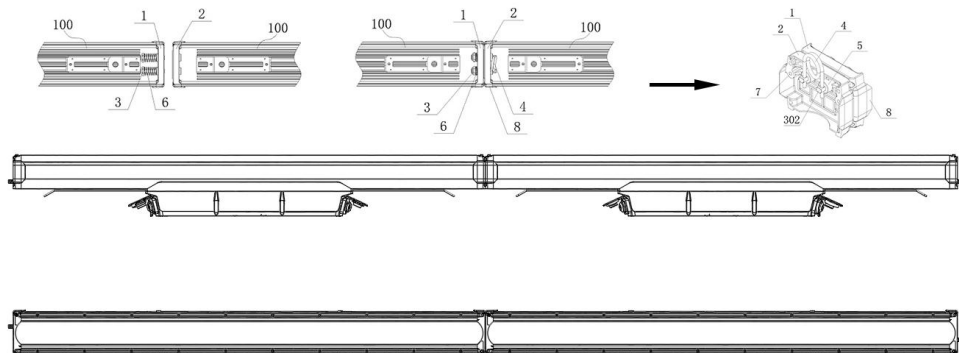
The installation of light must first fix with hooks, and then connect the light and lights. This structure is only used for the connection of lights or the hanging after the lights are vertically fixed. It cannot be used as a lever to lift other lights, nor can it be lifted horizontally. The end aluminum shell will be damaged!

**Important:**

When standing upright for use, the number of lights connected is 2

**Hanging vertically for use, the number of connections for lights is 3**

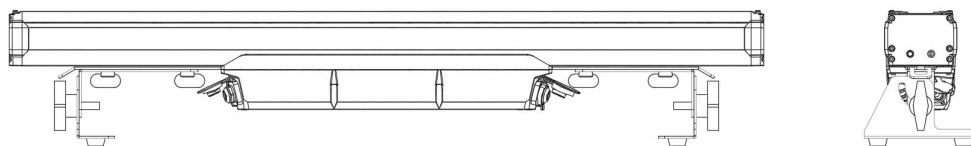
**To prevent accidents, a matching safety rope should be connected between the two lights.**



For the first uses this may be a little hard. Move the devices a little until the Bolts can be inserted completely. For vertical installation do not exceed the amount of 4 pieces. (caution, provisional specification) In case of hanging installation, each device needs to be saved individually! Using the quick-release pins for horizontal installation is not recommended. Each device should individually be installed with the given installation options below.

### **Horizontal Installation on the floor**

You could place the BAR on the floor by 2 stands. Please make sure the surface is plane and the reliability of the floor is sufficient.



### **Horizontal hanging with tilt bracket**

You can attach the BAR to a Truss or Pipe. Notice that the tilt bracket(106mm) should face down from the hanging structure. Use the centered holes in the Tilt Bracket. You can use the additional fix Omega Brackets to hang the device horizontal.

## Hanging Vertically “dropped”

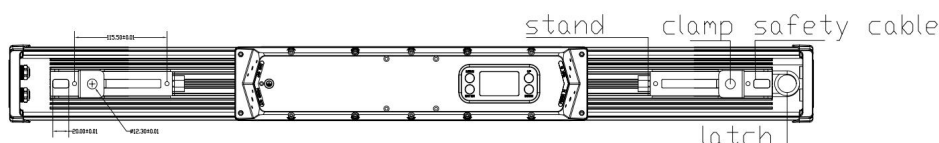
Use the vertical Adapter set (including Omega Bracket, optional accessory) to “drop” the BAR from a rigging structure. Notice that we will release a detailed rigging manual for the different options shortly.

## Vertical Installation on the floor

Use the vertical Adapter (optional accessory) in combination with a base plate (optional accessory). Use the Small standing plate (optional accessory) if you only wish to install one BAR. If you want to install more than one device, screw the Small standing plate to a normal truss base plate. We have two kinds of standing plate, fixed and infinite rotating, for your options. Notice that we will release a detailed rigging manual for the different options shortly.

## Safety attachment

In any case of rigging the device attach the Safety rope to any of the dedicate d eyelets integrated into the sliding brackets.



(Length of Omega & Safety cable position)

## 6. Connecting AC Power

The fixture can operate on any 100–240 V, 50/60 Hz AC mains power supply. For permanent installation, have a qualified electrician wire the mains cable directly to a suitable branch circuit.

The junction’s ingress protection (IP) rating must be suitable for the location.



For temporary installation, the mains cable may be fitted with a grounded connector intended for exterior use.

When installing standard type C circuit breakers there will be no limitations due to the fixture in-rush current. Due to the nominal current of the fixture, ensure that no more than:

8 fixtures are connected through the same type C, 16A circuit breaker.

The fixture must be grounded/earthed and be able to be isolated from AC power. The AC power supply must incorporate a fuse or circuit breaker for fault protection. After connecting the fixture to power, run the on-board test, using the “Mode→Auto” menu, to ensure that the fixture and each LED are functioning correctly. See “Control menu” on page 16.

**CAUTION:** Do not open the fixture to replace the supplied power cable, or connect the fixture to an electrical dimmer system, as this can damage it.

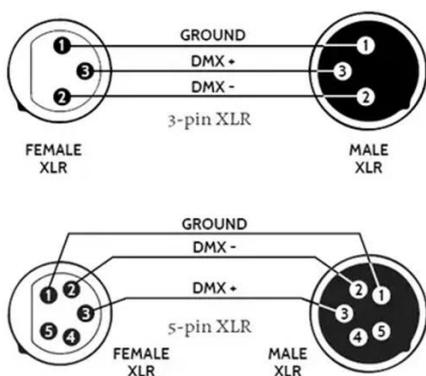
## 7. Connecting to a DMX control device

The fixture is controllable using a DMX control device and it can be connected using a DMX cable.

If using a cabled DMX system, connect the DMX in cable (with male 3/5-pin XLR plug) and out cable (with female 3/5-pin XLR plug) to the DMX data link.

Terminate the DMX out cable of the last fixture in the data link. For outdoor installations, use only IP-rated XLR connectors suitable for outdoor use.

The DMX-512 is widely used in intelligent lighting control, with a DMX-512 controller. connect several lights together, dmx in and dmx out, 3/5 pin XLR connectors: Pin 1: GND, Pin 2: Negative signal (-), Pin 3: Positive signal (+)



## DESCRIBE

DMX PIN CONFIGURATION
PIN 1: GROUND
PIN 2: DATA COMPLIMENT
PIN 3: DATA TRUE
PIN 4: -
PIN 5: -

## 8. Configuring the fixture for DMX control

### About DMX

The fixture can be controlled using signals sent by a DMX controller on a number of channels (which varies depending on the DMX mode that has been set).

The first channel used to receive data from a DMX control device is known as the DMX start address. Each fixture must have a DMX start address set. For example, if a fixture has a DMX address of 10 and it is in 4-channel DMX mode, then it uses channels 10, 11, 12 and 13. The following fixture in the DMX chain could then be set to a DMX address of 14. If two or more DMX fixtures of the same type have the same DMX address, then they will mimic each other's behaviour. Incorrect settings will result in unpredictable responses to the lighting controller.

### Setting the DMX address

The DMX address can be seen on the main screen. To change the address setting, press the up arrow to increase the address, or the down arrow to

decrease the setting. When the desired address is displayed, press Enter to save the setting.

Note that channel spacing is determined by the DMX mode.  
See the “DMX protocols” on page 11 for specific DMX control values.

### Setting the DMX mode

Using the “DMX mode” menu available from the control panel, specify the DMX mode that provides the fixture controls that you require, confirm chosen mode by pressing ‘Enter’.

## 9. Cleaning

To maintain optimal performance, regular cleaning is essential. Cleaning schedules will vary depending on the operating environment, and the installation should therefore be checked at frequent intervals within the first few weeks of operation to see whether cleaning is necessary. This procedure will allow you to assess cleaning requirements in your particular situation. Clean the fixture using a soft cloth dampened with a solution of water and a mild detergent. Do not use products that contain solvents, abrasives or caustic agents for cleaning, as they can cause damage to both hardware, cables and connectors.

## 10. DMX protocols

Configuring DMX is described “Setting the DMX mode” on page 16.

Channel					Value	Function
11CH	27CH	80CH	80 (16)	91CH		
1	1			1		<b>Dimmer :</b>
					0-255	All dimmer
2	2			2		<b>Strobe :</b>
					0-255	Strobe from slow to fast

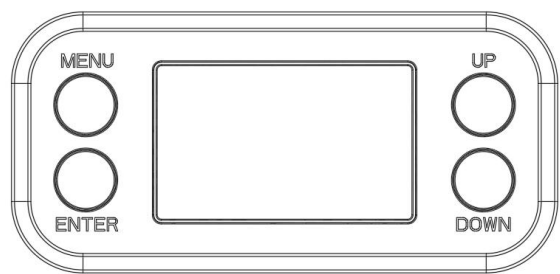
3	3			3		<b>Red :</b>
					0-255	Red dimmer
4	4			4		<b>Green :</b>
					0-255	Green dimmer
5	5			5		<b>Blue :</b>
					0-255	Blue dimmer
6	6			6		<b>White :</b>
					0-255	White dimmer
7	7			7		<b>Macro :</b>
					0-5	Empty
					6-14	Macro1(Controlled by CH3-6 )
					15-23	Macro2 ( ... )
					24-32	Macro3 ( ... )
					33-41	Macro4 ( ... )
					42-50	Macro5 ( ... )
					51-59	Macro6 ( ... )
					60-68	Macro7 ( ... )
					69-77	Macro8 ( ... )
					78-86	Macro9 ( ... )
					87-95	Macro10 ( ... )
					96-104	Macro11 ( ... )
					105-113	Macro12 ( ... )
					114-122	Macro13 ( ... )
					123-131	Macro14 ( ... )
					132-140	Macro15 ( ... )
					141-149	Macro16 ( ... )
					150-159	Macro17 ( ... )
					160-167	Macro18 ( ... )
					168-176	Macro19 ( ... )

					177-185	Macro20 ( ... )
					186-194	Macro21 ( ... )
					195-203	Macro22 ( ... )
					204-212	Macro23 ( ... )
					213-221	Macro24 ( ... )
					222-230	Macro25 ( ... )
					231-239	Macro26 ( ... )
					240-255	Macro27 ( ... )
8	8			8		<b>Macro Speed :</b>
					0-255	From slow to fast
9	9			9		<b>Dimmer mode :</b> Can be used for macro trailing and Dim-curve
					0-255	From slow to fast (default 16bit, 8bit at 255)
10	10			10		<b>RGBW Backlight :</b>
					0-255	RGBW Backlight
11	11			11		<b>User Colour :</b>
					0-1	Empty
					2-7	Red
					8-14	Rose
					...	...
					249-255	Colors
	12					<b>Red Dimmer LED1-5 :</b>
					0-255	Dimmer from dark to bright
	13					<b>Green Dimmer LED1-5 :</b>
					0-255	Dimmer from dark to bright
	14					<b>Blue Dimmer LED1-5 :</b>
					0-255	Dimmer from dark to bright
	15					<b>White Dimmer LED1-5 :</b>
					0-255	Dimmer from dark to bright

	16					<b>Red Dimmer LED6-10 :</b>
					0-255	Dimmer from dark to bright
	17					<b>Green Dimmer LED6-10 :</b>
					0-255	Dimmer from dark to bright
	18					<b>Blue Dimmer LED6-10 :</b>
					0-255	Dimmer from dark to bright
	19					<b>White Dimmer LED6-10 :</b>
					0-255	Dimmer from dark to bright
	20					<b>Red Dimmer LED11-15 :</b>
					0-255	Dimmer from dark to bright
	21					<b>Green Dimmer LED11-15 :</b>
					0-255	Dimmer from dark to bright
	22					<b>Blue Dimmer LED11-15 :</b>
					0-255	Dimmer from dark to bright
	23					<b>White Dimmer LED11-15 :</b>
					0-255	Dimmer from dark to bright
	24					<b>Red Dimmer LED16-20 :</b>
					0-255	Dimmer from dark to bright
	25					<b>Green Dimmer LED16-20 :</b>
					0-255	Dimmer from dark to bright
	26					<b>Blue Dimmer LED16-20 :</b>
					0-255	Dimmer from dark to bright

	27					<b>White Dimmer LED16-20 :</b>
					0-255	Dimmer from dark to bright
		1	1 <sup>(1/2)</sup> 2 <sup>(fine)</sup>	12		<b>Red 1:</b>
					0-255	R1 dimmer
		2	3 <sup>(1/2)</sup> 4 <sup>(fine)</sup>	13		<b>Green 1:</b>
					0-255	G1 dimmer
		3	5 <sup>(1/2)</sup> 6 <sup>(fine)</sup>	14		<b>Blue 1:</b>
					0-255	B1 dimmer
		4	7 <sup>(1/2)</sup> 8 <sup>(fine)</sup>	15		<b>White 1:</b>
					0-255	W1 dimmer
		5	1 <sup>(2/2)</sup> 2 <sup>(fine)</sup>	16		<b>Red 2:</b>
					0-255	R1 dimmer
		6	3 <sup>(2/2)</sup> 4 <sup>(fine)</sup>	17		<b>Green 2:</b>
					0-255	G1 dimmer
		7	5 <sup>(2/2)</sup> 6 <sup>(fine)</sup>	18		<b>Blue 2:</b>
					0-255	B1 dimmer
		8	7 <sup>(2/2)</sup> 8 <sup>(fine)</sup>	19		<b>White 2:</b>
					0-255	W1 dimmer
		...		...	...	...
		77	73 <sup>(2/2)</sup> 74 <sup>(fine)</sup>	88		<b>Red 20:</b>
					0-255	R20 dimmer
		78	75 <sup>(2/2)</sup> 76 <sup>(fine)</sup>	89		<b>Green 20:</b>
					0-255	G20 dimmer
		79	77 <sup>(2/2)</sup> 78 <sup>(fine)</sup>	90		<b>Blue 20:</b>
					0-255	B20 dimmer
		80	79 <sup>(2/2)</sup> 80 <sup>(fine)</sup>	91		<b>White 20:</b>
					0-255	W20 dimmer

# 11. Control menu



## Display:

- MENU** To select the programming functions
- DOWN** To go backward in the selected functions
- UP** To go forward in the selected functions
- ENTER** To confirm the selected functions

## Operations:

Press "**MENU**" to unlock screen, then press "**Menu**" to select 7 different functions, Press the "**UP** or **DOWN**"keys to increase or decrease the value,Press "**ENTER**" to save and Exit.

No.	Display		Description	
1	<b>DMX_CH11</b> <b>Addr=001</b>	Address 001-512	DMX 1-512	Current ctrl mode Current DMX address
2	Ctrl Mode	DMX_CH	<b>11</b> /27/80/80 (16)/91	5 ch mode 11/27/80/80(16)/91
		Alone	000-255	Alone
		Master slave	000-255	Master slave
3	Static Mode	red	000-255	Red dimmer,(000-255)
		green	000-255	Green dimmer,(000-255)
		blue	000-255	Blue dimmer,(000-255)



		white	000-255	White dimmer,(000-255)
		User Color	000-33	User Color (1-33)
		Marco	000-23	Marco
		Marco Speed	000-255	Marco Speed (slow-fast)
4	Adjust	D-Curve	<b>1-4</b>	Dimmer curve 1-4
		D-Mode	<b>08-16</b>	Dimmer mode 8/16Bit
		TEMP	25	Current temp
		NO_DMXX	<b>Closed</b> /Hold	DMX signal will be lost
		Invert Lights	<b>Off</b> /On	Lighting control invert Display cannot be inverted
		Factory	<b>NO</b> /YES	Reset Factory setting

## 12. Specification

### Light Source:

AC90-240V, 50/60HZ

400W power consumption

20 x 15W RGBW 4IN1 LEDs

50,000 hours expected lifetime

Optional: 6°,15°,20°,25°,45°

### Control:

Each LED can be controlled individually

DMX512, RDM, Master-Slave, Auto

11/27/80/80(16)/91 DMX channels

0-100% 8/16bit linear dimming

1-20 times/second strobe

### Construction:

Cast aluminum body

IP65 rating

2 x two quarter-turn locking points for two Clamps & stands

Bottom mount for safety wire

IP65 PowerCON True1 in and out, IP65 DMX in and out

### **Size and Weight:**

Carton: 2 in 1, Case: 4 in 1 or 8 in 1

Light: L1004 x W96 x H130 (Bracket H178) mm,

Carton size(2in1): 1270 x 320 x 220 mm,

Case size(8in1): 1180 x 600 x 550 mm, Case size(4in1): 1180 x 580 x 400 mm

Light Net Weight: 9 KG, Gross 2in1 22 KG,

Case 8in1: 115 KG, Case 4in1: 71 KG

### **Optional Accessories**

- PMMA froster
- PMMA cover
- Mask face
- Barndoor
- Stand plate + Stand & Hang Components
- Infinite rotation engine
- Clamp
- Flight case

**ATTENTION:**

1. When installing the devices vertically on the truss, the first device must be fastened with bracket and then the other devices must be connected. It is forbidden to lift the structure of several devices horizontally and use the first device as a lever for lifting other devices, otherwise the aluminum end housing and screws may be damaged!
2. The maximum temperature of surface is up to 60 C.
3. Disconnect the power before removing any cover!